

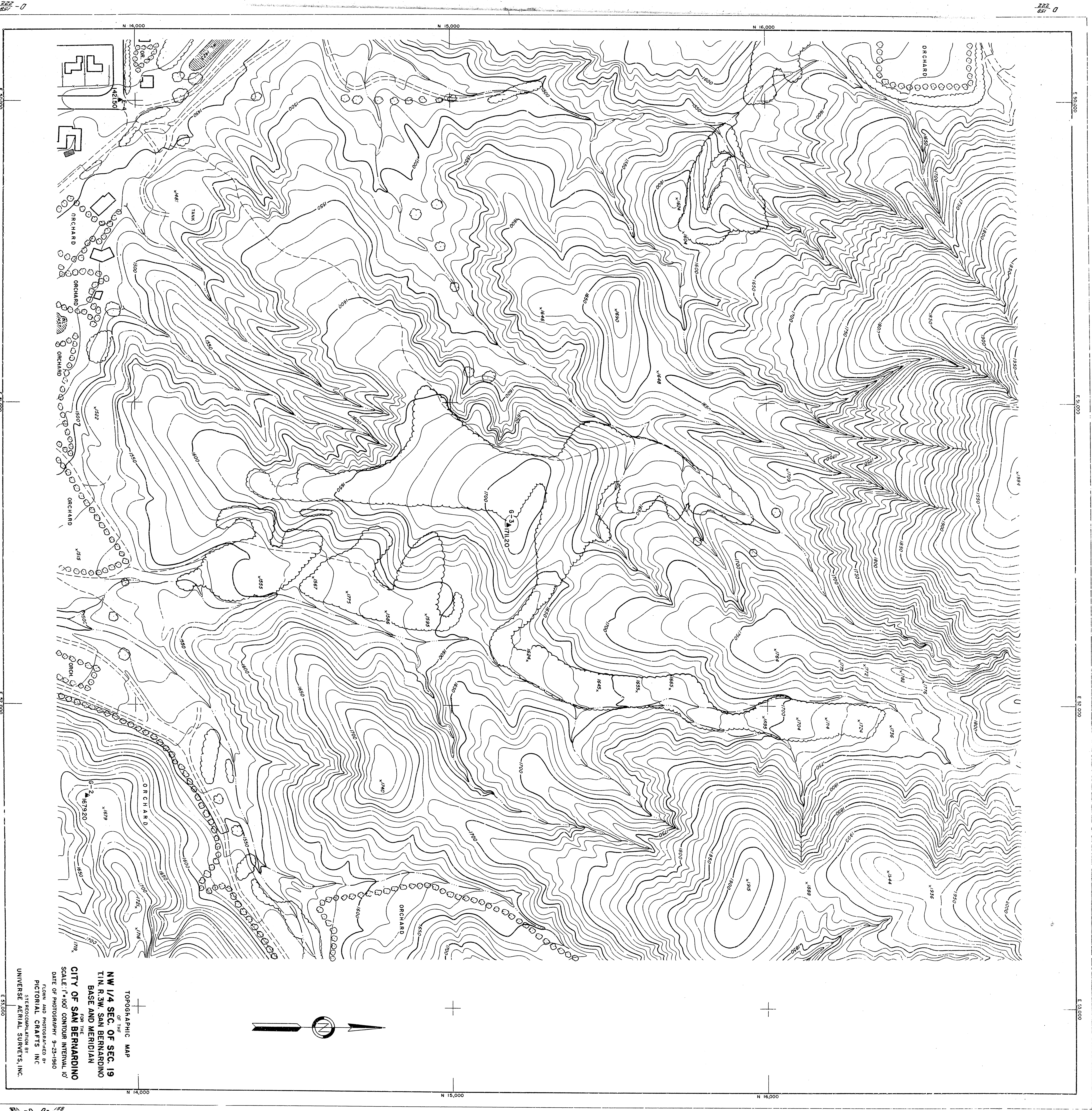
TOPOGRAPHIC MAP
OF THE
NW 1/4 SEC. OF SEC. 19
T1N, R3W, SAN BERNARDINO
BASE AND MERIDIAN
FOR THE
CITY OF SAN BERNARDINO
SCALE: 1"=100' CONTOUR INTERVAL 10'
FROM AND PHOTOGRAPHED BY
PICTORIAL CRAFTS, INC.
DATE OF PHOTOGRAPHY: 9-23-1950
STEREOCORRELATION BY
UNIVERSAL AERIAL SURVEYS, INC.

0-222

0-222

0-222

0-222



+
 TOPOGRAPHIC MAP
 OF THE
NW 1/4 SEC. OF SEC. 19
 T1N, R3W, SAN BERNARDINO
 BASE AND MERIDIAN
 FOR THE
CITY OF SAN BERNARDINO
 SCALE: 1" = 100' CONTOUR INTERVAL 10'
 DATE OF PHOTOGRAPHY: 9-23-1950
 FROM AND PHOTOGRAPHED BY
 PICTORIAL CRAFTS, INC.
 STEREOCORRELATION BY
 UNIVERSAL AERIAL SURVEYS, INC.
 E 33,000